



Mercian Road Rally 2017

INTER-ASSOCIATION ROAD RALLY 2017

Final Instructions

Thank you for your entry. Your car number is shown on the rallies.info entry list.

Should any details on the entry list be incorrect, please contact the Entries Secretary immediately.

We are again collecting money for Warwickshire & Northamptonshire Air Ambulance. Please help us to support this essential emergency service. It is run entirely on donations so please give generously.

Noise Test, Scrutineering and Trailers (see map)

Please report to the **Noise Test** on Westfield Road, Southam, CV47 0JH. Map 151/412¾ 610¼ (opposite Southam Tyres) at 19:00 plus your car number in minutes.

After Noise, please report to **Scrutineering** which is 100 metres away at Stairways car park, Southam Drive, Southam, Warwickshire, CV47 0FA. Map 151/412 609¾ (next to Southam Tyres).

You will need your valid MOT certificate.

Overnight Trailer and Navigator Parking

There will be parking for pre-booked trailers at Stairways car park. To book, please email Dave Barratt dave@bubbler.co.uk. Navigators should leave their cars in Stairways car park next to trailer parking. Please note there is no facility to park trailers at either the Start or Finish venues.

Fuel

Please ensure that you have enough fuel to cover 85 miles before reporting to Noise. There is a 24hr Shell Garage on the A423/A425 roundabout and Tesco Fuel available up to 10pm near Noise (see map). Fuel is available at halfway together with drinks, cold snacks and sandwiches.

Signing on and Start Venue (see map)

Southam United Football Club. Banbury Road. Nearest postcode CV47 2PT Map 151/416 608

You must enter via the gate through the hedge NOT the more obvious entrance to the bowls club.

Park in the competitors' car park as directed. Space will be tight so please leave the minimum space between cars. Signing on is in the small clubhouse at the south end of the ground. There is a social function at the larger bowls club clubhouse at the north end, please do not go there by mistake.

Please note that the Football ground will be locked once the rally has started. Do not leave vehicles in there overnight! Similarly, anyone parking in the industrial estate opposite the Football Club is very likely to get locked in until Monday!

At Signing on competitors will be asked to provide any missing entry information, produce club cards, MSA licences (for Nat B event only) and declare their insurance arrangements. It would be very helpful if you could have these details to hand.

- Noise Test will open at 19:00 and close at 22:00
- Scrutineering will open at 19:00 and close at 22:00
- Signing on will open at 19:00 and close at 22:00
- Any crew not signed on by 22:00 may be excluded.
- Competitors' briefing at 22:30

Competitors are reminded that the Start and Finish venues are extremely NOISE SENSITIVE, so please be considerate to the local householders.

A burger van has been booked.

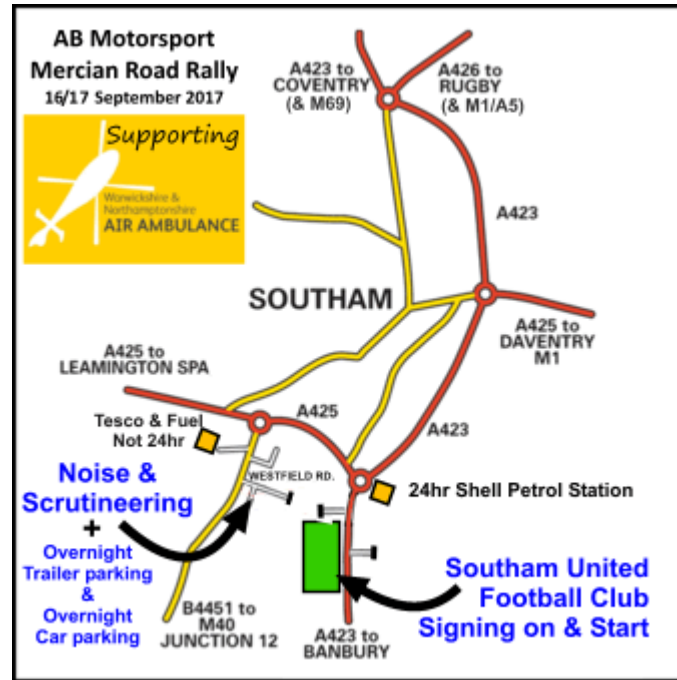
continued...



Mercian Road Rally 2017

INTER-ASSOCIATION ROAD RALLY 2017

Final Instructions



To Start Southam United Football Club

Westfield Rd

SOUTHAM TYRES

Southam Pet Store

Noise Test Area

Scrutineering Area

Trailer Parking & Overnight Car Parking

Stairways

< WAIT HERE - leave room for trailers to pass

AB Motorsport Mercian Road Rally
Competitor Schedule: 16th/17th September 2017
19::00 + plus your start number for Noise
after Noise proceed to Scrutineering
After Scrutineering go to Southam United Football Club for Signing on
22:00 Noise & Scrutineering close
22:30 Competitors' Briefing
23:25 Car 1 leaves MTC1



Mercian Road Rally 2017

INTER-ASSOCIATION ROAD RALLY 2017

Final Instructions



continued...



Mercian Road Rally 2017

INTER-ASSOCIATION ROAD RALLY 2017

Final Instructions

Membership & Licences

You will require club membership cards from either:

- (a) Clubmans event. A constituent club of Mercia Motor Sports or one of the invited clubs.
- (b) Nat B event. A club belonging to one of the invited associations AND an MSA Competition Licence of National 'B' status or higher.

Membership of Rugby Motor Club will be available if needed.

An MSA Non-Race National 'B' licence may be applied for/renewed at Signing on by providing a properly completed application form (including photo) and payment of £43.00. Application forms can be downloaded from the MSA website. Please let the Entries Secretary know in advance if you intend to apply on the night.

Competitors who have already obtained a 2017 MSA Competition Licence but fail to produce it will need to pay the non-production of licence fee of £67.00

Competitors' Briefing

Competitors are required to attend a briefing at 22:30 in the area of the small clubhouse.

Finish

The finish is at The Wharf Inn, Fenny Compton, Nr Southam CV47 2FE. Map 151/431¾ 533
Car 0 is expected back just after 05:00

Amendments/Additions/Clarifications to Supplementary Regulations

3. Authorisation

D.o.E authorisation number will be displayed on the Official Notice Board

8. Route

The route has been plotted on OS maps 151 rev. C4 & Feb 2016, 152 rev D4 & Feb 2016

10. Penalties

Section R Appendix 1. Chart 13

- c)
 - i) Wrong direction of approach to a Passage Control or required Secret Check. 5 minutes
 - ii) Any other form of not complying with the route card including visiting a control more than once. 15 minutes

continued...

Final Instructions

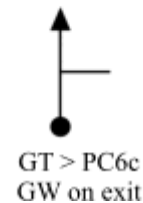
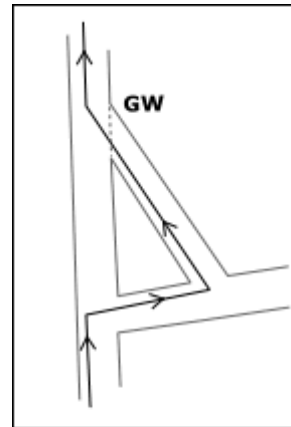
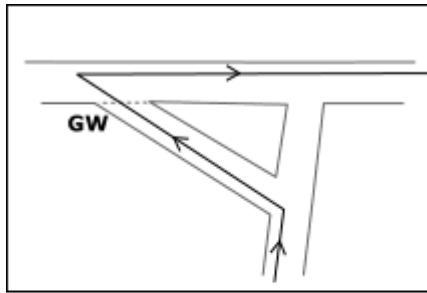
9. Route Instructions

Give Way/Stop Junctions

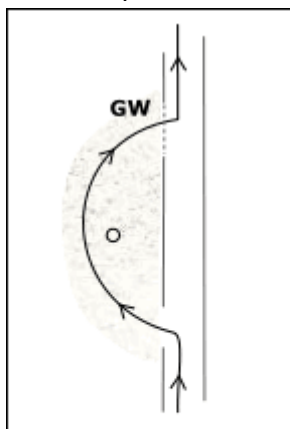
On competitive sections Standard (STC) and Intermediate Regularity (IRTC) where junctions are specified as Give Way (GW), competitors are required to come to a complete halt. This is not optional. **A complete halt means ceasing all forward motion with the wheels stationary.** Driving Standards Observers (DSOs) will be present during the event.

With the agreement of the RLOs of Northamptonshire, Oxfordshire and Warwickshire, junctions specified as Give Way (GW) in Transport (TTC) and Neutral (NTC) (Non-competitive) sections may be treated as per the highway code (R9.1.4)

Some Grass Triangles are specified in the route instructions as 'GW' or 'GW on exit'. The diagrams below show how the junction might look on the ground for that tulip instruction and where the Giveaway (GW) would be expected.



Not as Map features are specified as 'GW on exit'.



543 123
around cone
on concrete
< NAM PC12a
GW on exit

continued...

Final Instructions

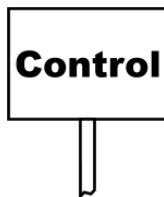
15. Timing and Controls

This event will use a 'Summer Time' timecard and each timecard is unique to your car number. The Car 0 time is shown for each time control. The line immediately below that shows your scheduled time for each time control. There are numbered spaces (minutes) below to allow for lateness. The bottom line of numbers is the last minute of OTL for each time control. At early controls in each half, there is 15 minutes of lateness, at other controls there is 30 minutes. At the finish MTC4 only, OTL is extended to 45 minutes. There is an extended space for this on the last timecard if required.

In the event that an STC is converted to an unmanned passage control/route check, the only make up time allowed will be that from the following manned control – **do not use any make-up time for the unmanned control.**

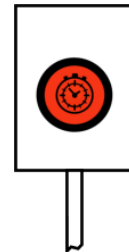
Boards

Code boards will be displayed on the left-hand side of the road except at grass triangle or other not as map features where it may be more feasible to display on either the left or right-hand side of the road. An example will be shown at the start.



Manned controls/checks will have an approach warning board approximately 50 metres before on the correct direction of approach. Where the manned control/check is located at a Grass Triangle or other Not as Map feature, this distance will be shorter.

On **IRTC time controls** to enable marshals to provide fair and consistent timing, an additional timing board will be used **after** the control warning board. Competitors will be timed as they pass the timing board. This board will only be used at IRTC time controls. This will be explained at the briefing.



Special Tests

A new Special Test 1 has been added at the Start of the event.

On Special Tests 2 and 3, some features on the diagram are split by a line of cones or posts and you are required to keep on the correct side of the 'split' for that test and record a code board. On Test 2, where you are required to keep right of the 'split' features, the code board will be displayed within the line of cones (which is on your left). On Test 3, where you are required to keep left of the 'split' features, the code board will be displayed within the line of cones (which is now on your right).

Passage Controls/Route Checks

Passage Controls and Route Checks are given names such as **PC3a**. The number '**3**' signifies the name of the time control where any codes should be signed for, in this case **STC3**. The letter '**a**' signifies the sequence of Passage Controls/Route Checks for that section, in this case '**a**' being the first. A section may have several Passage Controls/Route Checks named for example **PC3a, PC3b, PC3c** etc. *continued...*



Mercian Road Rally 2017

INTER-ASSOCIATION ROAD RALLY 2017

Final Instructions

19. Awards

'Best of the Tests' for the fastest aggregate time including any penalties on the Special Tests.
Motorsport accessories courtesy of James Newbould & Bruce Chambers at Competition Supplies, Towcester.

20. Officials

A list of Stewards will be displayed on the Official Notice Board at the Start venue.

A list of Judges of Fact will be displayed on the Official Notice Board at the Start venue.

28. Navigation

___ Solid line - denotes a coloured road in the navigation.

---- Dashed line - denotes a white road in the navigation. Whites are only shown where used or to clarify the location of other whites and important junctions.

Miscellaneous

You are reminded that Section 170 of the Road Traffic Act 1988 and Rule 286 of the Highway Code requires that any injury incidents must be reported to the Police Authority.

Competitors are also reminded that they must at all times comply with the requirements of the current Road Traffic Act and that neither the organising club, the regional associations nor the Motor Sports Association will be held responsible for any failure to do so.

In addition to all our sponsors and advertisers, the organising team wish to thank:

Southam United FC for generously allowing us the use of the start venue at short notice.

Power Maxed Products for providing the marshals' goody bags.

The Tyre Warehouse in Brackley for the loan of tyres for the special tests.